

NEW DESCRIPTIONS

A NEW SPECIES OF *MARPISSA* KOCH (ARANEAE: SALTICIDAE) FROM INDIA¹

KANCHAN MONGA², J. P. SINGH³ AND G. L. SADANA⁴

(With two text-figures)

A new species of genus *Marpissa* from Northern India is described.

All type specimens will, in due course, be deposited in the collections of the Zoological Survey of India, Calcutta.

Marpissa singhi sp. nov. (Figs. 1-2)

Female cephalothorax: Carapace: length 1.84 mm; maximum breadth 1.52 mm; about four fifth as wide as long, with sides curved outwards, flattened, yellow, covered with fine pubescence. Cephalic region not distinctly marked from thoracic region. Eyes: eight, transparent, encircled by black rims; arranged in three rows, ocular quad less than half the length of cephalothorax. Diameter of eyes (mm): A.M. = 0.27; A.L. = 0.10; P.M. = 0.07

and P.L. = 1.15. Mutual distances between the eyes (mm): A.M. - A.M. = 0.49; A.M. - A.L. = 0.40; A.M. - P.M. = 0.56; A.M. - P.L. = 0.89; P.M. - P.M. = 1.11; P.M. - P.L. = 0.40; P.L. - P.L. = 1.13 and A.L. - A.L. = 1.20. Width of clypeus: 0.01 mm. Chelicerae: yellow with two teeth on promargin and one on retromargin. Maxillae: yellow, broad at anterior end and narrower at base with thick black scopulae at anterior margin. Labium: yellow, subtriangular, with a few brown stiff hairs at anterior end. Sternum: yellow with a few brown hairs, convex, oval, narrow at anterior end, smaller in width than the base of labium. Tibia and metatarsi I & II with three and two pairs of ventral spines, respectively. Coxae of legs separated by a distance less than their own diameter. Length of legs (mm):

Leg	Coxa	Trochanter	Femur	Patella	Tibia	Metatarsus	Tarsus	Total
I	0.17	0.10	0.93	0.20	0.57	0.43	0.33	2.73
II	0.17	0.10	0.73	0.23	0.40	0.27	0.37	2.27
III	0.17	0.07	0.67	0.17	0.33	0.27	0.30	1.98
IV	0.17	0.10	0.77	0.20	0.50	0.40	0.30	2.44

¹ Accepted August 1988.

² Haryana Agricultural University, Hisar.

³ Department of Zoology, Punjabi University, Patiala.

⁴ Department of Zoology, Punjab Agricultural University, Ludhiana.

Abdomen: Length 2.48 mm; maximum breadth 1.52 mm; flattened, oval in shape, projecting over the cephalothorax to obscure pedicel. Dorsum yellow with a light streak in the centre of the posterior half and covered

NEW DESCRIPTIONS

all over with brown hairs. Venter yellow, with a pair of thin streaks extending from epigastric furrow to spinnerets. Epigynum as in Fig. 2.

Total length: ♀ 4.32 mm.

Holotype: ♀, in spirit, INDIA: HARYANA: Kalesar Reserve Forest, Dist. Ambala, 4.v.1979, K. Monga.

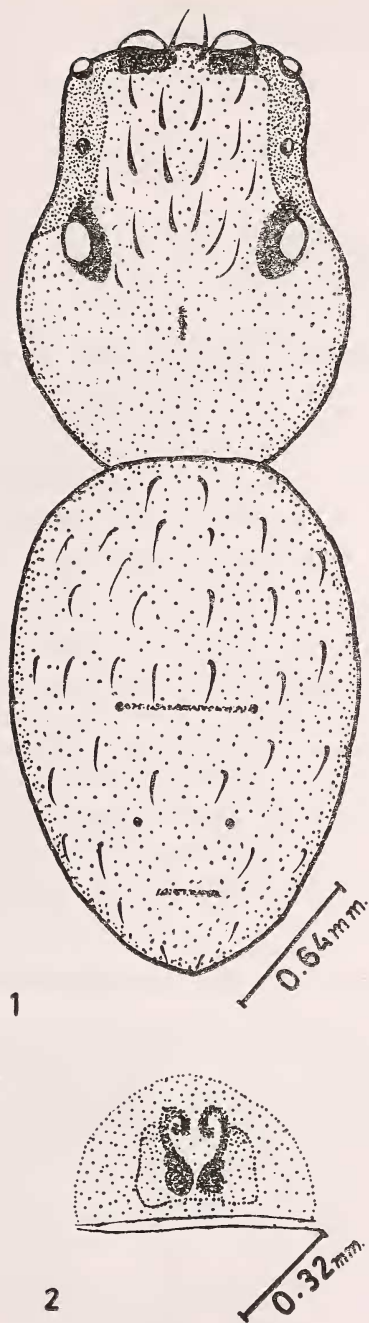
This species resembles slightly with *Marpissa andamanensis* Tikader but can be distinguished from it by the considerable difference in size, absence of white bands on cephalothorax, and presence of a light streak in the posterior half of the abdomen instead of longitudinal patch present mid-dorsally in *M. andamanensis*. The structure of epigynum is also different.

ACKNOWLEDGEMENTS

We thank the Professor and Head, Department of Zoology, Punjabi University, Patiala for providing laboratory facilities.

REFERENCES

- SADANA, G. L. & KAUR, M. (1974): A new species of spiders of genus *Marpissa* Koch (Salticidae) from India. *Bull. Br. Arachn. Soc.*, 3(2): 49-50.
- TIKADER, B. K. (1965): A new spider of genus *Marpissa* (family Salticidae) from India. *Sci. Cult.* 31(5): 262.
- (1967): Studies on some salticid spiders from Sikkim, Himalaya, India. *Proc. Ind. Acad. Sci.* 66(4): 117-122.
- (1974): Studies on some spiders of genus *Marpissa* from India (family Salticidae). *ibid.* 79(1-6): 204-215.
- (1977): Studies on spider fauna of Andaman & Nicobar Islands, Indian Ocean. *Rec. Zool. Surv. India* 72: 153-212.



Figs. 1-2. *Marpissa singhi* sp. nov.: 1. Dorsal view of female; 2. Epigynum.